

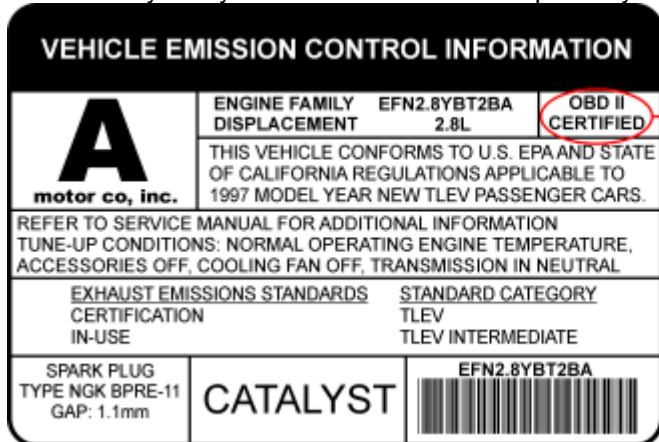
ELM327 Wifi OBD II

Works with OBD-II compliant vehicles. Software included in CD for Smartphone, PC and iOS (for iPhone, iPad, iTouch, Mac). Clear trouble codes and turn off the MIL ("Check Engine" light). Read diagnostic trouble codes, both generic and manufacturer-specific, and display their meaning.

Vehicle Coverage:

Works on all OBD2 Vehicles (1996 onwards in USA) and EOBD vehicles (Petrol cars from 2001 and diesel cars from 2003/2004 in Europe)

Please verify that your vehicle is OBD-II compliant by **looking under the hood for a sticker indicating compliance.**



This guide explains how to connect **ELM327 WIFI scanner** to your **Apple/Android phone or tablet**.

1. Plug ELM327 WIFI Scanner into vehicle's OBD2 port. (Port is usually found on the driver side dashboard under the steering wheel.)
2. Turn ON ignition. (This is one step before engine is powered.)
3. On your device — go to "Settings" > "Wi-Fi". Connect to the Wi-Fi signal with name similar to these examples: WIFI ELM327, Wi-FiOBD, OBDDevice, V-Link.

NOTE: It can take up to 30 seconds for WIFI signal to show.

Password to connect: 12345678

4. Launch your OBD App. (We put together a list of best OBD apps [here](#).)
5. Go to Apps Settings and configure it to look for WIFI. ([This article](#) explains how we did this for Torque. Same principle applies to any OBD application.)
6. OBD App should now successfully connect to your vehicle.

NOTE: If OBD App still doesn't detect the WIFI connection — then force quit the app and launch it again. (To force quit inside Android, use "Task Manager". Inside iOS, double-press the home button.)

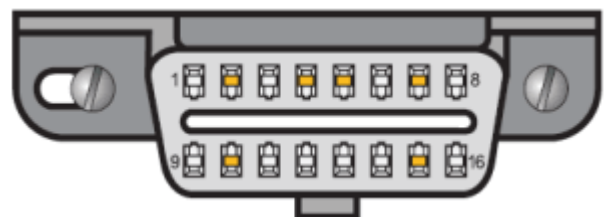
Windows Vista, 7, 8, 10:

1. Plug ELM327 WIFI Scanner into vehicle's OBD2 port. (Port is usually found on the driver side dashboard under the steering wheel.)
2. Turn ON ignition. (This is one step before engine is powered.)
3. Inside Windows WIFI manager — connect to Wi-Fi signal with name similar to these examples: WIFI ELM327, Wi-FiOBD, OBDDevice, V-Link.

NOTE: It can take up to 30 seconds for WIFI signal to show.

Password to connect: 12345678

4. Launch your OBD Software. (We recommend [TOAD software](#) which is 100% compatible with WIFI.)
5. Go to software Settings and configure it to look for WIFI. (It's usually set to USB or Bluetooth).
6. Configure WIFI IP Address to **192.168.0.10** and Port to **35000**.
7. Software should now successfully connect to your vehicle.



iOS/Android Compatible OBD Apps with ELM327 Scanner



Android

Free

- [ScanMaster Lite](#)
- [Torque Lite \(OBD2 & Car\)](#)
- [OBD2-ELM327 Car Diagnostics](#)
- [OBD Dashboard \(Free\)](#)
- [Carista OBD2](#)
- [ScanMyOpel Lite](#)
- [OBDLink](#)
- [hobDrive Demo](#)
- [OBD Car Doctor](#)
- [EcoShifter OBD2 Car](#)
- [Scanator Android \(in-app purchases\)](#)
- [Efficiency \(free\)](#)
- [VAG DTC Fault Memory erase](#)
- [BMWhat Lite](#)

Paid

- [DashCommand](#)
- [Torque Pro](#)
- [ScanMyOpel](#)
- [hobDrive](#)
- [OBD Car Doctor Pro](#)
- [OBD DROIDSCAN PRO](#)
- [TouchScan \(OBD Diagnostics\)](#)
- [Efficiency Pro](#)
- [BMWhat](#) (Only BMW)



Apple iOS

Free

- [OBD Auto Doctor](#)
- [EOBD Facile](#)

iPad Optimized Apps

- [DashCommand](#)
- [iCanOBD2](#) (Only VW, Audi, Seat, Skoda)
- [Engine Link HD](#)

Paid

- [DashCommand](#)
- [EngineLink](#)
- [REV](#)
- [NovaScan - The OBD Total Solution](#)
- [BMWhat](#) (Only BMW)
- [OBD2 Scanner](#)