

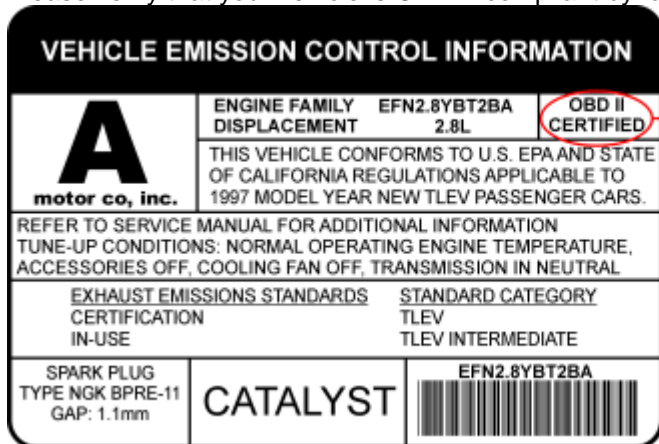
# ELM327 Bluetooth OBD II

Works with OBD-II compliant vehicles. Software included in CD for Android Smartphone, PC. Clear trouble codes and turn off the MIL ("Check Engine" light). Read diagnostic trouble codes, both generic and manufacturer-specific, and display their meaning.

## Vehicle Coverage:

Works on all OBD2 Vehicles (1996 onwards in USA) and EOBD vehicles (Petrol cars from 2001 and diesel cars from 2003/2004 in Europe)

Please verify that your vehicle is OBD-II compliant by **looking under the hood for a sticker indicating compliance.**



This guide explains how to connect **ELM327 BlueTooth scanner** to your **Android phone or tablet.**

1. Plug ELM327 Bluetooth Scanner into vehicle's OBD2 port. (Port is usually found on the driver side dashboard under the steering wheel.)
2. Turn ON ignition. (This is one step before engine is powered.)
3. On your device — go to "Settings" > "Bluetooth". Connect to the Bluetooth signal with name similar to these examples: ELM327, OBD-II, OBDDevice, V-Link.

**NOTE:** It can take up to 30 seconds for WIFI signal to show.

**Password to connect: 1234 or 0000**

4. Launch your OBD App. (We put together a list of best OBD apps [here.](#))
5. Go to Apps Settings and configure it to look for WIFI. ([This article](#) explains how we did this for Torque. Same principle applies to any OBD application.)

OBD App should now successfully connect to your vehicle.

**NOTE:** If OBD App still doesn't detect the WIFI connection — then force quit the app and launch it again. (To force quit inside Android, use "Task Manager". Inside iOS, double-press the home button.)

## Windows Vista, 7, 8, 10:

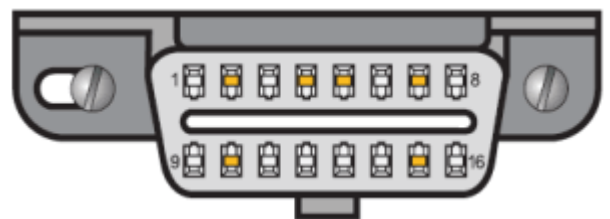
### STEP 1: Plug Bluetooth into Car's OBD Port

It looks like this...

It's usually found on the driver side dashboard under the steering wheel.

### STEP 2: Turn ON Car Ignition

This is one step before engine is powered.

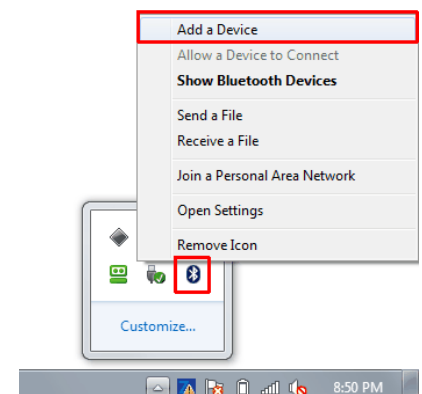


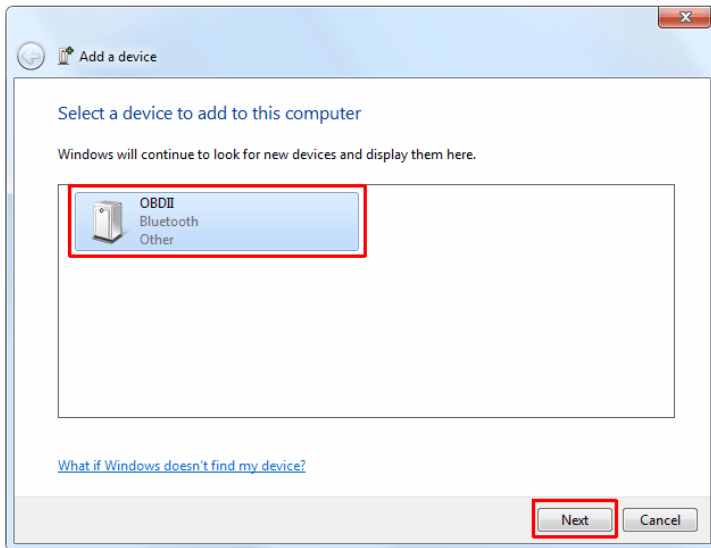
### STEP 3: Add and Pair ELM327 Bluetooth to Windows

1. Right click on Bluetooth icon in task manager > Add a Device

2. Select ELM327 Bluetooth device. It'll come under different names like: OBDII, VLink, Can OBDII, etc.

**NOTE:** It can take up to 30 seconds for Bluetooth signal to show.





3. When you see list of pairing options like this:  
 (For Windows XP users, your option will be: *Use the passkey found in the documentation*)  
 Enter the pairing code:

**Pair code: 1234**  
 If above doesn't pair, then: 0000

→ **Enter the device's pairing code**  
 The device comes with a pairing code.  
 Check for one on the device or in the device manual.

#### STEP 4: Launch OBD Software and Connect to Vehicle

Launch your OBD Software. (We recommend [TOAD software](#) which is 100% compatible with Bluetooth.)  
 Click "Connect" and it should automatically detect your ELM327 Bluetooth device and connect to your car.

## iOS/Android Compatible OBD Apps with ELM327 Scanner

### Android

#### Free

- [ScanMaster Lite](#)
- [Torque Lite \(OBD2 & Car\)](#)
- [OBD2-ELM327 Car Diagnostics](#)
- [OBD Dashboard \(Free\)](#)
- [Carista OBD2](#)
- [ScanMyOpel Lite](#)
- [OBDLink](#)
- [hobDrive Demo](#)
- [OBD Car Doctor](#)
- [EcoShifter OBD2 Car](#)
- [Scanator Android \(in-app purchases\)](#)
- [Efficiency \(free\)](#)
- [VAG DTC Fault Memory erase](#)
- [BMWhat Lite](#)

#### Paid

- [DashCommand](#)
- [Torque Pro](#)
- [ScanMyOpel](#)
- [hobDrive](#)
- [OBD Car Doctor Pro](#)
- [OBD DROIDSCAN PRO](#)
- [TouchScan \(OBD Diagnostics\)](#)
- [Efficiency Pro](#)
- [BMWhat \(Only BMW\)](#)

### Apple iOS

#### Free

- [OBD Auto Doctor](#)
- [EOBD Facile](#)

#### iPad Optimized Apps

- [DashCommand](#)
- [iCanOBD2 \(Only VW, Audi, Seat, Skoda\)](#)
- [Engine Link HD](#)

#### Paid

- [DashCommand](#)
- [EngineLink](#)
- [REV](#)
- [NovaScan - The OBD Total Solution](#)
- [BMWhat \(Only BMW\)](#)
- [OBD2 Scanner](#)